



WASHINGTON
&
JEFFERSON
COLLEGE



PRE-LAW PROGRAM

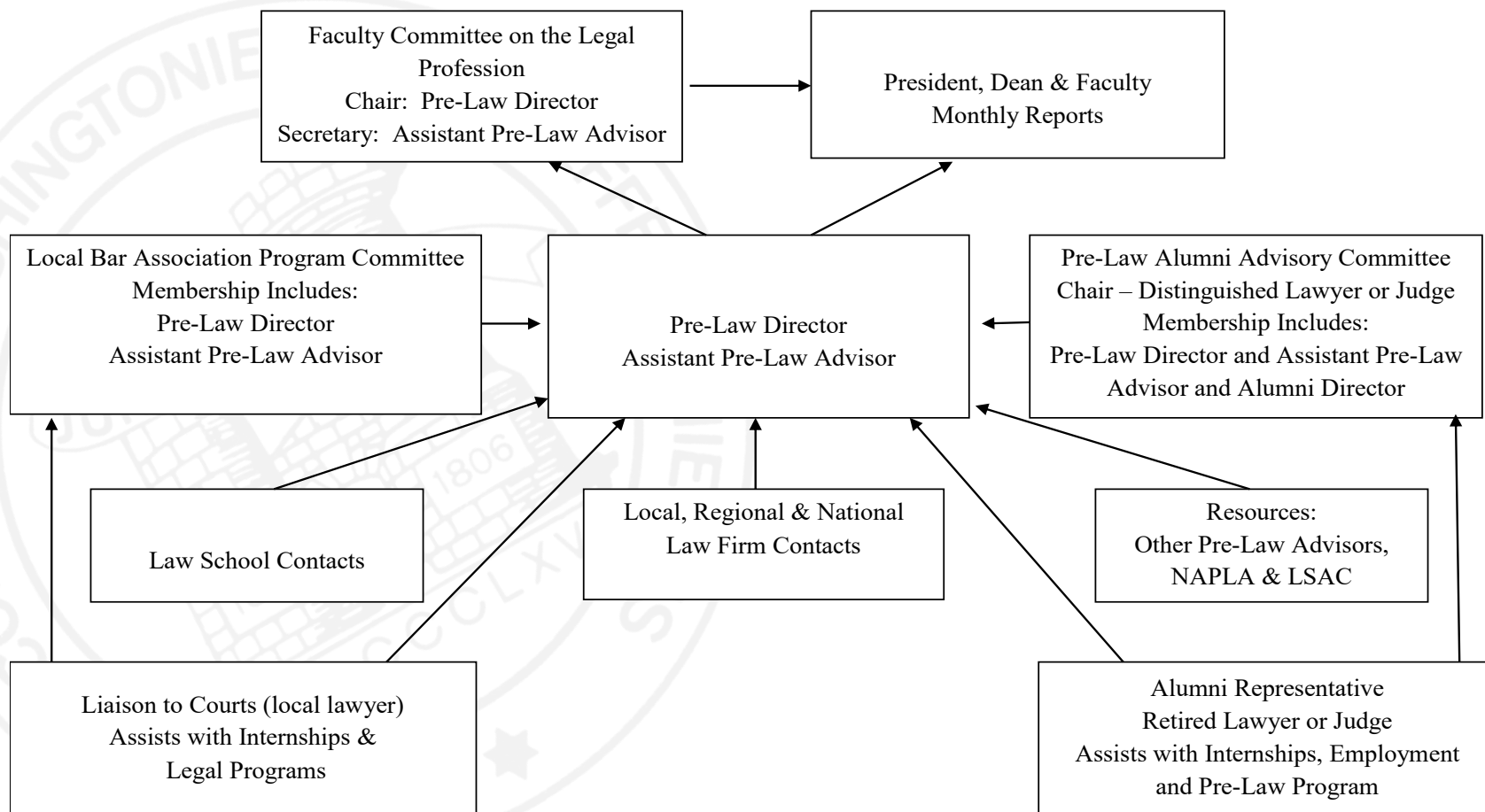


PRE-LAW CHART



WASHINGTON
&
JEFFERSON
COLLEGE

Washington & Jefferson College Pre-Law Chart



PRE-LAW ADVISORS



WASHINGTON
&
JEFFERSON
COLLEGE



Dr. Joseph DiSarro
Professor and Department
Chair of Political Science

Pre-Law Advisor
Director of Pre-Law Program



Dr. Buba Misawa
Professor of Political
Science and Director of
International Studies

Assistant Pre-Law Advisor

PRE-LAW COMMITTEE



WASHINGTON
&
JEFFERSON
COLLEGE

Dr. Joseph DiSarro, Political Science, Director of Pre-Law

Dr. Annette Drew-Bear, English

Dr. Lori Galley, Economics, Business and Accounting

Dr. Colleen Hyden, Sociology

Dr. Robert East, Environmental Studies, Secretary

Dr. Hanna Kim, Philosophy

Dr. Buba Misawa, Political Science, Assistant Pre-Law Advisor

ALUMNI • PRE-LAW ADVISORY COMMITTEE



WASHINGTON
&
JEFFERSON
COLLEGE

Andrew Aloe, Esq. '76

Frank C. Botta, Esq. '81, Director W&J
CLE Program

A. Bradley Collins, '98

Jeffrey J. Conn, Esq. '81

Richard D. Gilard, Esq. '52

Brian S. Green, Esq. '97

Charles W. Hergenroeder, Esq. '69
(Chair)

Robert Johnson '66

Lynn Arko Kelley Esq. '77

Christine Kornosky Esq. '77

Alexander H. Lindsay, Jr., Esq. '68

James A. Lynn, Esq. '59

Mark Rush, Esq. '84

Hon. Fredrick Sharer '60

Robert H. Shoop, Esq. '60

Robert H. Stevenson, Esq., '64

Hon. William Thomas '91

Hon. Christina Ward '79

Patricia L. Wozniak, Esq., '82

Dianne S. Wainwright, Esq. '86

**Joseph DiSarro, Professor/Pre-Law
Director**

Buba Misawa, Assistant Pre-Law Advisor

SUGGESTED COURSES



WASHINGTON
&
JEFFERSON
COLLEGE

- Advanced Composition
- American Government
- American Literature
- Argumentation and Debate
- Business Law
- Information Technology
- Entrepreneurship
- Ethics
- Formal Logic
- History of the United States
- International Law
- Marketing
- Principles of Accounting I & II
- Principles of Economics
- Psychology
- Supreme Court and the Bill of Rights

GENERAL RECOMMENDATIONS



WASHINGTON
&
JEFFERSON
COLLEGE

1. Maintain a minimum G.P.A. of 3.2.
2. Attend meetings and lectures sponsored by the Pre-Law Society.
3. Plan to take the practice LSAT in April of your junior year.
4. Plan to take the LSAT in the Fall of your senior year.
5. Apply to a minimum of five law schools.
6. Visit law schools.
7. Participate in college activities.
8. Meet with the Pre-Law Advisor on a regular basis.
9. Submit your applications electronically through LSAC.org
10. Include a personal statement and a resume with all applications.
11. Submit letters of recommendation through LSAC.org

3/3 EARLY ADMISSIONS PROGRAM



WASHINGTON
&
JEFFERSON
COLLEGE

DUQUESNE UNIVERSITY SCHOOL OF LAW

The only circumstance in which candidates may apply for admission without a baccalaureate degree is through a pre-arranged 3/3 Early Admissions Agreement between the applicant's institution and the Law School. The McAnulty College of Liberal Arts, A.J. Palumbo School of Business Administration, the Mary Pappert School of Music, and the Bayer School of Natural and Environmental Sciences cooperate with the School of Law in programs that enable students to receive a bachelor's degree after three years of undergraduate work and successful completion of the first year of law school. The Law School has partners with several other Universities and well.

ELIGIBILITY REQUIREMENTS



WASHINGTON
&
JEFFERSON
COLLEGE

DUQUESNE UNIVERSITY SCHOOL OF LAW

Eligibility for the early admission programs generally require a minimum cumulative grade point average of 3.5 over three years; completion of all undergraduate curricular requirements; a minimum LSAT score in at least the 60th percentile (students interested in applying should take the LSAT in the fall or winter of their junior year); a letter of recommendation from a pre-law advisor, undergraduate advisor, and/or a professor to the Law School's Office of Admissions; and a personal interview with the Admissions Committee.

ACCELERATED LAW ADMISSIONS PROGRAM (ALAP)



WASHINGTON
&
JEFFERSON
COLLEGE

UNIVERSITY OF PITTSBURGH SCHOOL OF LAW

What Is ALAP?

ALAP is the Accelerated Law Admissions program (also known as the 3/3 Program) that allows exceptional students completing their undergraduate studies at one of our partner schools the opportunity to complete their undergraduate degree while beginning their first year of law school. These students complete their bachelor's degree and law degree in a total of six years, rather than seven.

ALAP CONTINUED



WASHINGTON
&
JEFFERSON
COLLEGE

Who Should Apply

Students enrolled at the following schools are eligible to apply for the ALAP Program:

- University of Pittsburgh Dietrich School of Arts and Sciences
- University of Pittsburgh College of Business Administration
- Washington and Jefferson College
- Carlow University

The ALAP program is highly competitive and students with outstanding academic achievement are encouraged to apply. LSAT scores must also be competitive with the applicant pool. For a list of the specific requirements that apply to students from each of our partner schools, please see the appropriate tab at the bottom of this page.

ALAP CONTINUED



How to Apply?

In addition to satisfying the requirements listed under the relevant tab below, ALAP applicants (like all law school applicants) must take the LSAT exam as part of their application.

Submit an application to Pitt Law prior to April 1st of an applicant's junior year.

Schedule an Interview with the Office of Admissions at Pitt Law.

PITT ARTS & SCIENCES

CARLOW

**WASHINGTON &
JEFFERSON**

**PITT COLLEGE OF
BUSINESS
ADMINISTRATION**

- Students must have completed 102 credits within the College of Arts and Sciences by the end of their junior year.
- Students considering the ALAP program must declare their majors at the end of their first year of undergraduate study- in order to complete the requirements within their major by the end of three years.
- Students must complete three (rather than two) designated writing courses beyond the freshman writing requirement.
- The College of Arts and Sciences requirement of completion of 12 credits in a “related area” will be waived for ALAP participants.
- Potential applicants are encouraged to consider summer coursework during their second year of study to help reduce the number of credits needed in the third year of undergraduate study.
- Students admitted to the ALAP program will officially complete their Bachelor's Degree after completing their first year of Law School.

INFORMATION ON THE WEB



WASHINGTON
&
JEFFERSON
COLLEGE

www.lawpreview.com

www.lawcornell.edu

www.supremecourtus.gov

www.abanet.org/

[www.lsac.com/\(LSAT-Online Prep course\)](http://www.lsac.com/(LSAT-Online%20Prep%20course))

www.LSAC.org

PLACEMENT RECORD ACCEPTANCES



WASHINGTON
&
JEFFERSON
COLLEGE

YEAR	APPLICANTS	STUDENTS ACCEPTED
1998	36	33
1999	24	22
2000	51	48
2001	39	35
2002	34	31
2003	37	33
2004	29	24
2005	29	26
2006	27	23
2007	34	31
2008	40	36
2009	41	36
2010	43	40
2011	45	40

YEAR	APPLICANTS	STUDENTS ACCEPTED
2012	39	34
2013	31	29
2014	28	26
2015	38	34
2016	37	32
2017	31	25
2018	30	28
TOTAL	742	666
MEAN	35.38	31.71

From 1998 – 2018:
W&J students have been accepted at an acceptance rate of approximately 90% as compared to a National acceptance rate of 67%.

LAW SCHOOLS

The quality and geographical distribution of law schools gives the Pre-Law Program a national reputation. Here are the law schools accepting W&J students in the last 12 years (multiple acceptances):

- Akron, University of
- Alabama, University of
- Albany School of Law
- American University
- Arizona State
- Arizona, University of
- Ave Maria University
- Baltimore, University of
- Boston College
- Boston University
- Baylor University
- California-Davis, University of
- California, University of Southern
- California Western School of Law
- Capital University
- Case Western Reserve University
- Catholic University
- Chicago – Kent University
- Cincinnati, University of
- Cleveland Marshall School of Law
- Connecticut, University of
- Cornell University
- Dayton, University
- Denver, University of
- DePaul University College of Law
- Denver University
- Duke University

LAW SCHOOLS *CONTINUED*



WASHINGTON
&
JEFFERSON
COLLEGE

- Duquesne University
- Emory University
- Florida, University of
- Fordham University
- Franklin Pierce School of Law
- George Mason University
- George Washington University
- Georgetown University
- Georgia, University of
- Golden Gate University
- Hofstra University
- Houston, University of
- Illinois, University of
- Indiana University
- Kentucky, University of
- Louisville, University of
- Loyola of Chicago
- Loyola of New Orleans
- Maine University
- Maryland, University of
- Michigan State University
- Miami, University of
- Minnesota, University of
- Nebraska, University of
- New England School of Law
- New York Law School
- New York University School of Law
- North Carolina, University of

LAW SCHOOLS *CONTINUED*



WASHINGTON
&
JEFFERSON
COLLEGE

- Northern Illinois University
- Northwestern University
- Notre Dame, University of
- Nova Southeastern University
- Ohio Northern University
- Ohio State University
- Pace University
- Penn-State Dickinson
- Pennsylvania, University of
- Pittsburgh, University of
- Quinnipiac University
- Richmond, University of
- Roger Williams School of Law
- Rutgers University
- San Diego, University of
- Santa Clara University
- Seattle University
- Seton Hall University School of Law
- South Texas School of Law
- Southern Methodist University
- Southwestern University at Los Angeles
- St. John's University
- St. Louis University
- St. Mary's School of Law
- St. Thomas University

LAW SCHOOLS *CONTINUED*



WASHINGTON
&
JEFFERSON
COLLEGE

- State University of New York-Buffalo
- Stetson University
- Suffolk University
- Syracuse University
- Temple University
- Tennessee, University of
- Texas, University of
- Texas Tech University
- Texas Wesleyan
- Thomas Cooley School of Law
- Toledo, University of
- Touro University
- Valparaiso University
- Vanderbilt University
- Vermont School of Law
- Villanova School of Law
- Virginia, University of
- Wake Forest University
- Washington and Lee University
- Wayne State University
- Western New England
- West Virginia University
- Widener University School of Law
- William Mitchell School of Law
- William & Mary
- Wisconsin, University of

W&J DISTINGUISHED LEGAL PROFESSIONALS



WASHINGTON
&
JEFFERSON
COLLEGE

Jeffrey J. Conn, Esq., W&J '86

J.D. – University of Pittsburgh

Managing Partner

Clark, Hill, Thorp, LLP

Pittsburgh, PA

Bret R. Harris, Esq., W&J '88

J.D. – New York University

Wilentz, Goldman & Spitzer, LLP

New Jersey & New York

2008 – Best Lawyers in America

George D. Novak II, Esq. W&J '85

J.D. – University of Pittsburgh

Aerospace Industries Association,

Assistant Vice President of Civil

Aviation

David J. Beveridge, Esq., W&J '82

J.D. – University of Texas

Global Manager Partner

Shearman & Sterling, LLP

New York, NY

Who's Who Capital Markets Lawyers

W&J DISTINGUISHED LEGAL PROFESSIONALS CONT.



WASHINGTON
&
JEFFERSON
COLLEGE

Thomas Rooney, Esq., W&J '93

J.P. – University of Miami
Instructor of Law
U.S. Military Academy West Point
Former Congressman 16th District of
Florida

Nathan D. Chambers, Esq., W&J '79

J.D. – University of Denver
Chambers Dansky & Mulvahill, LLC
Denver, Colorado

Representative Scott A. Petri, Esq., W&J '82

J.D. – Villanova University
Former Pennsylvania House of
Representatives 78th District

Craig A. Nard, Esq. W&J '87

J.D. Capital, LLM, JSD - Columbia
Professor of Law & Director of Center
for Law, Technology and the Arts,
Case Western Reserve, Cleveland, Ohio



Karen L. Valihura, Esq., W&J '85

J.D. University of Pennsylvania
Chambers USA: America's Leading
Lawyers for Business 2008
Justice of The Supreme Court of
Delaware

Kevin Ohlson, Esq., W&J '82

J.D. University of Virginia
Judge, U.S. Court of Appeals for the
Armed Forces, Washington, DC

A. Michael Pratt, Esq., W&J '81

J.D. Harvard,
Pepper Hamilton, LLP
Philadelphia, PA
Eighty-First Chancellor of
Philadelphia Bar Association

Mark A. Rush, Esq., W&J '84

J.D. Duquesne University
Partner - Kirkpatrick, Lockhart &
Gates, LLP
Defense Counsel - Dr. Cyril H. Wecht

**The Honorable William
Thomas, W&J '91**

J.D. Temple University
Criminal Division 11th Judicial
Circuit Court Miami, Florida

Melissa Hart, Esq., W&J '84

J.D. University of Pittsburgh
Former Representative
4th Congressional District of
Pennsylvania

W&J '85

J.D. University of Pittsburgh, LLM
Judge Advocate General School
United State Army
Deputy General Counsel for
Operations & Personnel
Deputy Staff Judge Advocate U.S.
Army Special Forces Command
Judge Advocate General School
United States Army

W&J DISTINGUISHED LEGAL PROFESSIONALS CONT.



The Honorable Christina Ward, W&J '79

J.D. University of Pittsburgh,
Court of Common Pleas, Pittsburgh, PA

Marquitte Starkey, Esq., W&J '89

J.D. University of Virginia
General Counsel University of Denver

Carla Vrsansky, Esq., W&J '82

J.D. Duquesne University
Buchanan, Ingersoll & Rooney LLP
Pittsburgh, PA

The Honorable Sallie Updyke Mundy, W&J '84

J.D. University of Pittsburgh
Justice of The Supreme Court,
Commonwealth of Pennsylvania

Frank Botta, Esq., W&J '81

J.D. Temple University
Lynch Group, Southpoint, PA
Pittsburgh, PA
President Association of Transportation
Lawyers



Karla Johnson, Esq., W&J '06

J.D. University of Pittsburgh
Reed Smith, Pittsburgh, PA

Ralph A. Finizio, W&J '79

J.D. University of Pennsylvania
Pepper Hamilton, LLP
Pittsburgh, PA

Albert Bates, Jr. Esq., W&J '83

J.D./MBA Vanderbilt
Duane Morris, LLP
Pittsburgh PA

Brant Miller, Esq., W&J '95

University of Pittsburgh
Dickie, McCamey & Chilcote, LLP
Pittsburgh, PA
2006 Pennsylvania Super Lawyer

Darrell R. Mounts, W&J '84

J.D. William & Mary
Partner Kirkpatrick, Lockhart, Gates
Washington, D.C.

W&J DISTINGUISHED LEGAL PROFESSIONALS CONT.



WASHINGTON
&
JEFFERSON
COLLEGE

Mary S. Brodsky, Esq., W&J '90

J.D. St. Johns University

Partner - Harman & Craven, LLP

New York City

M. Gerald Schwartzbach, Esq.

W&J '66

J.D. George Washington University

Gerald Schwartzbach P.C. Mill Valley,

California

Defense Counsel Robert Blake (Baretta)

& Dr. Hootan Roozrokh

Ebony Miller, W&J '00

J.D. Washington & Lee

Counsel for First Energy

Cleveland, OH

Michael J. Lucas, Esq. W&J '89

J.D. Duquesne University

Judge, Court of Common Pleas

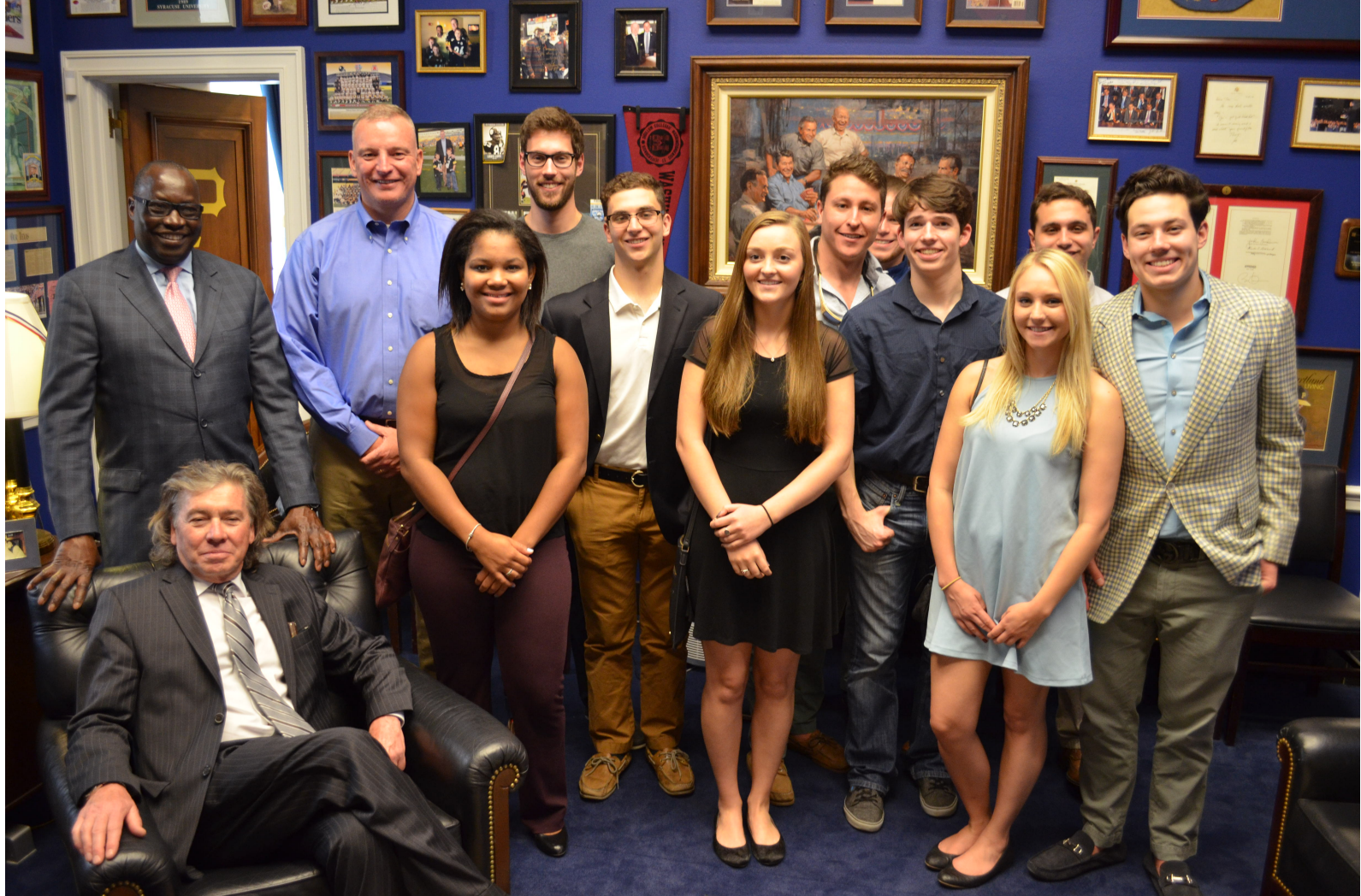
Washington, PA

Gary Gilman, W&J '84

J.D. American University

Judge, Court of Common Pleas,

Washington County, PA



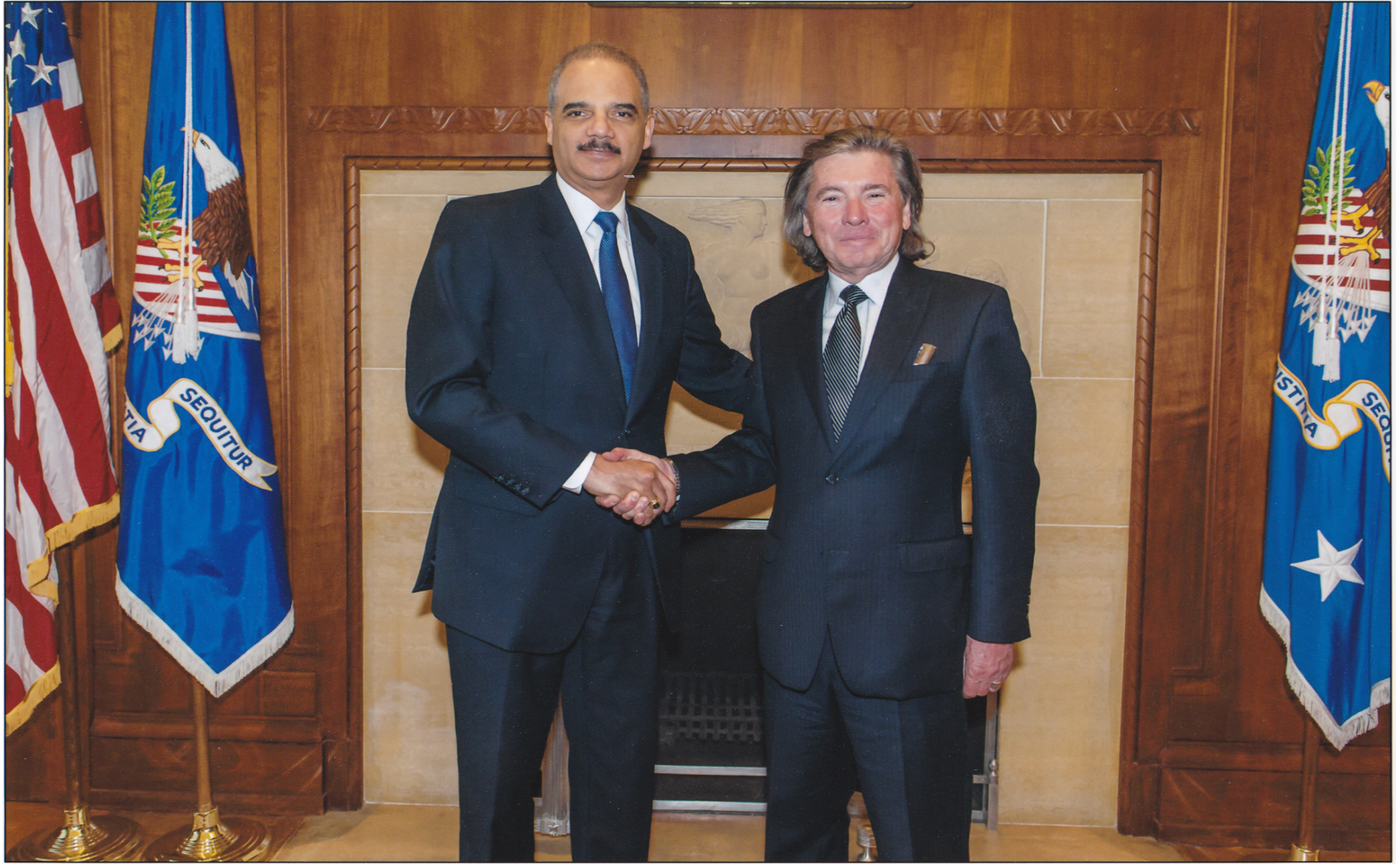
Travelers to the Nations Capital via the W&J Capital Seminars Program. Row 1: Alexyss Coles '20, Ethan Heller '18, Ellie Blixt '18, Breanna Todd '17, Richard Umbel '19. Row 2: Nathaniel Ecker '17, Richard Berner '19, Sean Carrick '19, Bryan Whitaker '19, James Campese '17.



Pre-Law Society at Annual Luncheon



Congresswoman Melissa Hart with Jon Stehle '04 (center), Business Director of The Performa Group and City of Fairfax Councilman



Eric Holder (left), the 82nd Attorney General of the United States from 2009 to 2015, with Dr. Joseph DiSarro (right) at The United States Department of Justice.



Kevin A. Ohlson '82



Judge William L. Thomas '91

Kevin A. Ohlson '82 (left; former Chief of Staff & Counselor to United States Attorney General Eric Holder; and Judge William L. Thomas '91 (right, Miami, FL Criminal Courts). President Barack Obama announced the appointment of Kevin A. Ohlson to United States Court of Appeals for the Armed Forces and of William L. Thomas to the Federal District Court (Southern District of Florida).



Dr. DiSarro teaching a pre-law class on campus



Dr. DiSarro & Pre-Law Society Meeting with Justice Sonia Sotomayer,
United States Supreme Court

FOR MORE INFORMATION



Pre-Law Advisor: *Dr. Joseph DiSarro*

Department of Political Science

Office: Old Main, Second Floor, Office H

Phone: 724-223-6183

Email: jdisarro@washjeff.edu

Assistant Pre-Law Advisor: *Dr. Buba Misawa*

Assistant Pre-Law Advisor

Office: Old Main, Second Floor Office F

Phone: 724-223-6186

Email: bmisawa@washjeff.edu